

अनामय

THE DOORWAY TO BLISS





THE DOORWAY TO BLISS

Nestled in the bylanes of
Ideal Colony in Kothrud,
Anamay offers the best of living.
Welcome to the abode of good life,
here at Anamay.





ABOUT PROJECT

Anamay – literally meaning trouble-free, the one who is blessed with a good and happy life; this project by Nestcon is an epitome of the same. Step into a world of worry-free living, where the luxuries of life are at your feet.

Situated in the serene location of Ideal Colony, this project will add value to your life. Standing tall and grand, homes here open to panoramic views of the charming lanes and tiny homes. Replete with modern-day facilities and amenities, this project will be an ideal escape to a blissful life.

- 2 & 3 BHK nests
- 11 storeyed project
- Smart and comfortable layout
- Scenic balcony views
- High-end facilities



AMENITIES

- Single point access control system
- Attractive facade
- Double coat external sand faced plaster
- Branded quality water resistant & durable external paint
- Designer entrance lobby with seating arrangements
- Auto-Door, 8 passengers elevator and stretcher elevator of a branded company
- Back-up for elevator, lobby area lighting and water pump
- CCTV surveillance for common areas
- Firefighting system
- Borewell with a separate tank
- Solar water heater system
- Rainwater harvesting system
- Letter boxes at the parking level
- Vermicomposting system / pits
- Decorative compound wall



SPECIFICATIONS

R.C.C. structure as per I.S. codes

Internal Walls :

- Walls in A.A.C. blocks
- Gypsum finish plaster for walls and ceiling
- Plastic emulsion paint for walls

Flooring:

- 800 x 800 vitrified tiles of a reputed brand
- Matt finish tiles in toilets and balconies

Toilets:

- Designer crafted tile patterns
- Single level diverter with overhead shower, spout and basin mixer
- Hand- shower in master toilet
- Branded company sanitary ware- basins and water closet with soft close seat cover
- Granite counter for basin

Kitchen:

- Two granite kitchen platforms (main & service)
- S.S. sink

Doors:

- Safety door with designer grill
- Main door with night latch, tower bolt and handle
- All other flush doors having laminate finish
- Laminated door frames for all other doors
- Granite frames for toilet doors

Windows:

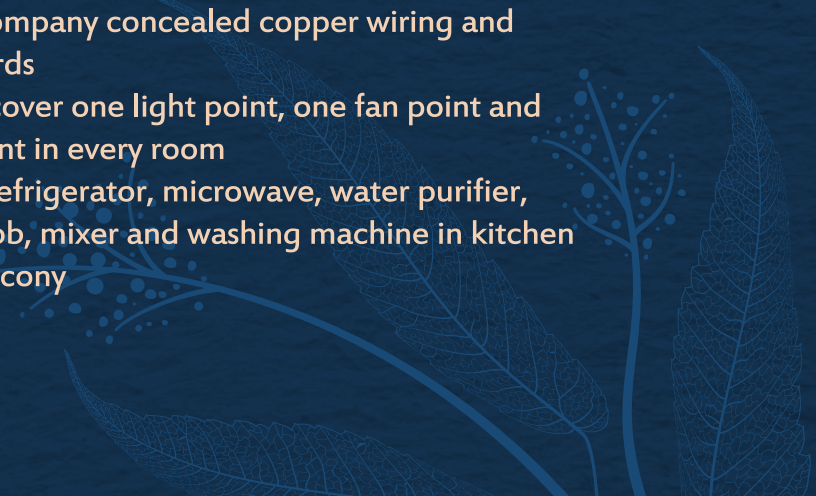
- UPVC windows with mosquito net
- M.S. safety grills
- Granite window sills

Hall balcony:

- Toughened glass railings with film

Electrical:

- Branded company concealed copper wiring and switch boards
- Wiring to cover one light point, one fan point and one 5A point in every room
- Points for refrigerator, microwave, water purifier, chimney hob, mixer and washing machine in kitchen and dry balcony

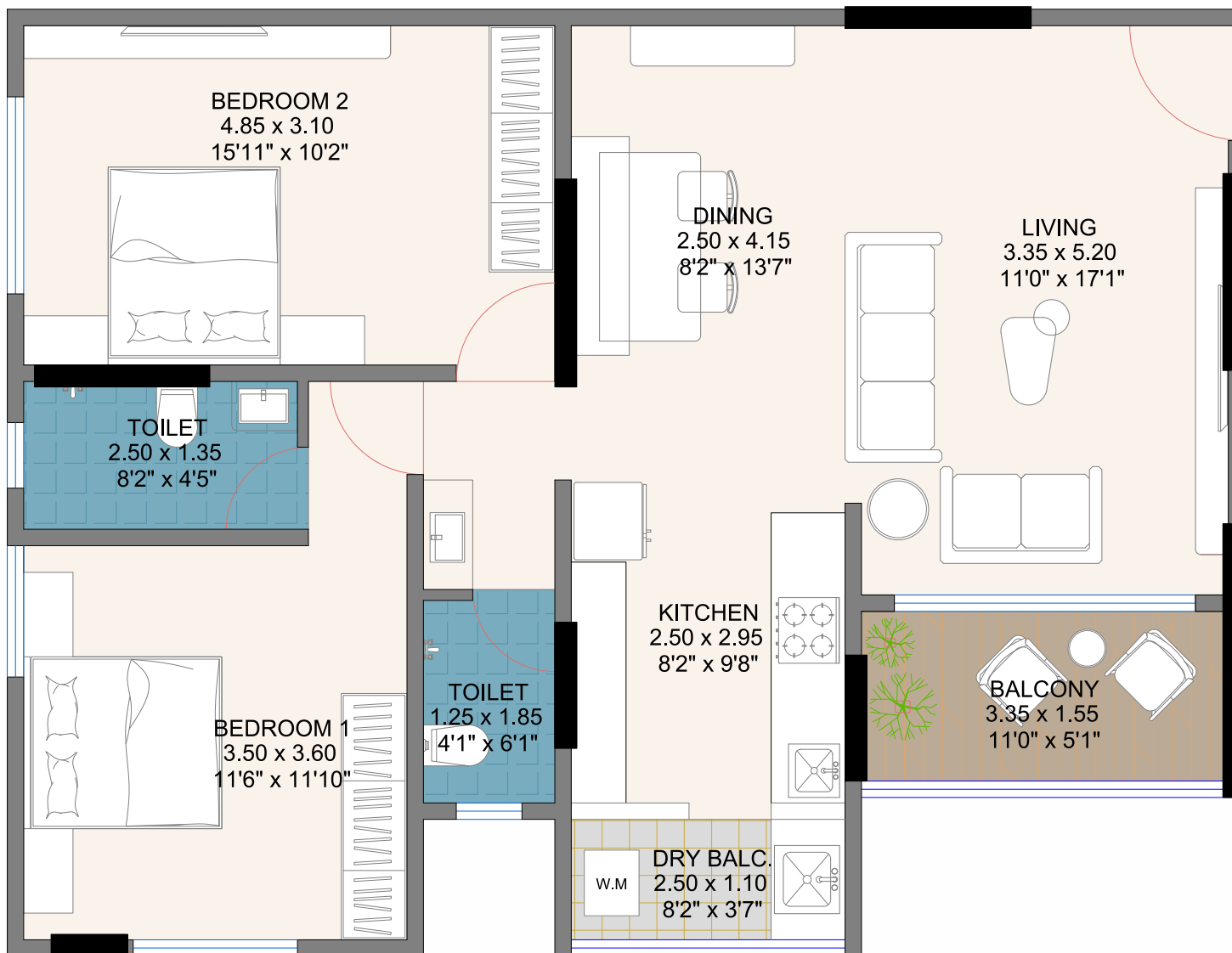


2 BHK NEST - Isometric View

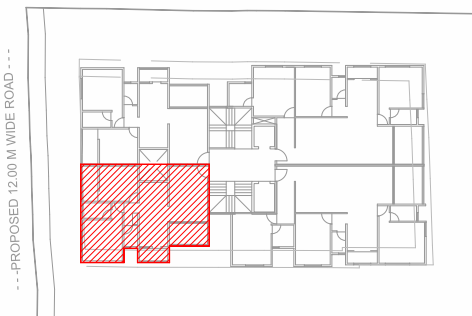


3 BHK NEST - Isometric View





KEY AREA

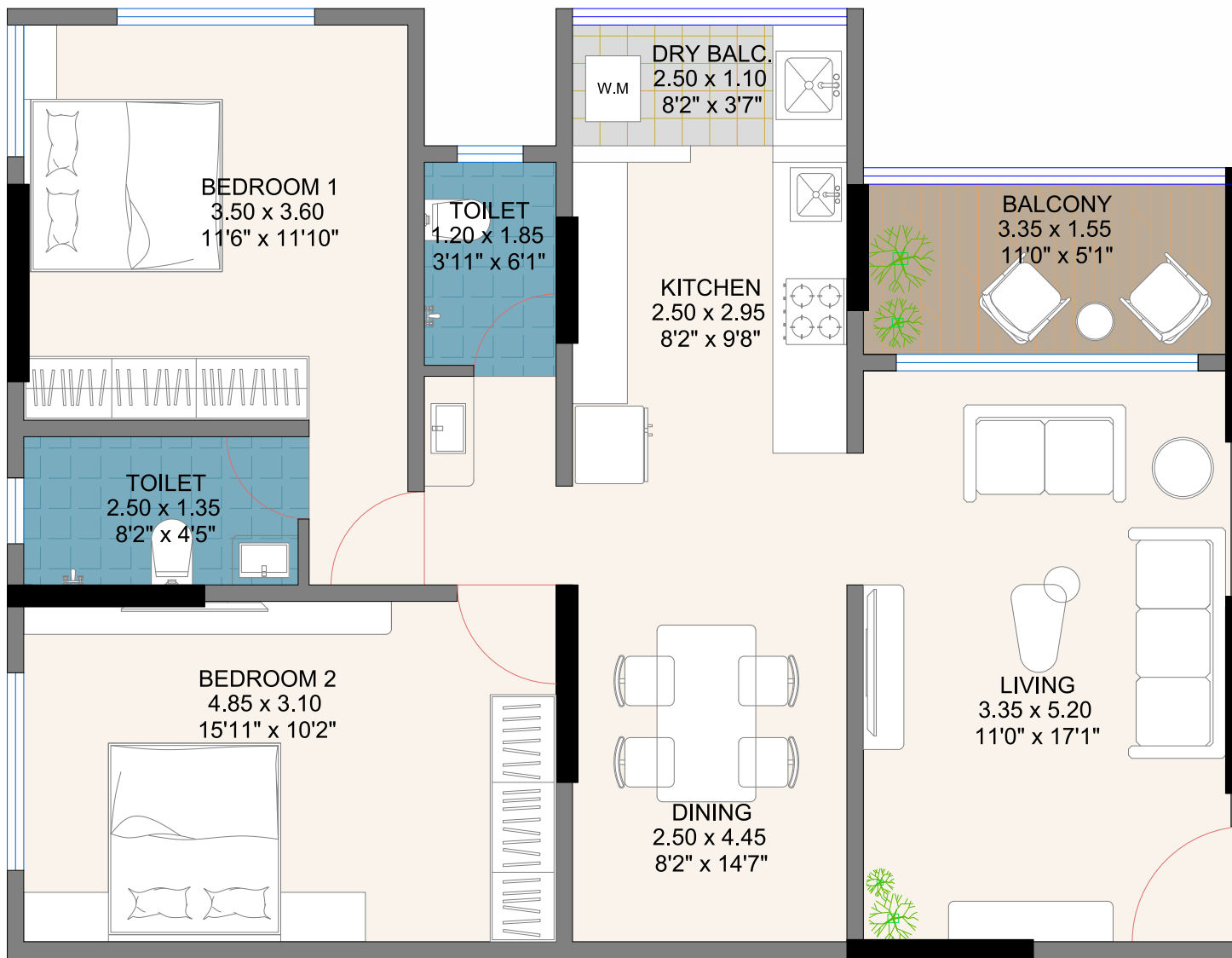


---PROPOSED 12.00 M WIDE ROAD---

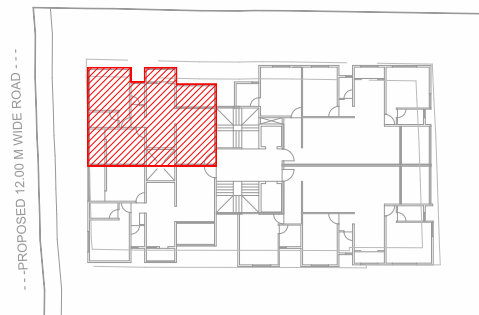


2BHK
101, 201, 301 up to 1101

FLAT NO.	CARPET (SQMT)	BALCONY (SQMT)	TOTAL CARPET (SQMT)	TOTAL CARPET (SQFT)
101, 201, 301 up to 1101	76.62	7.94	84.56	910.20

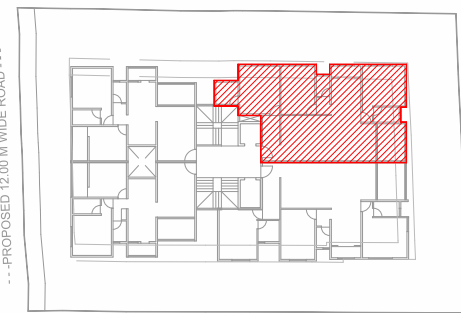
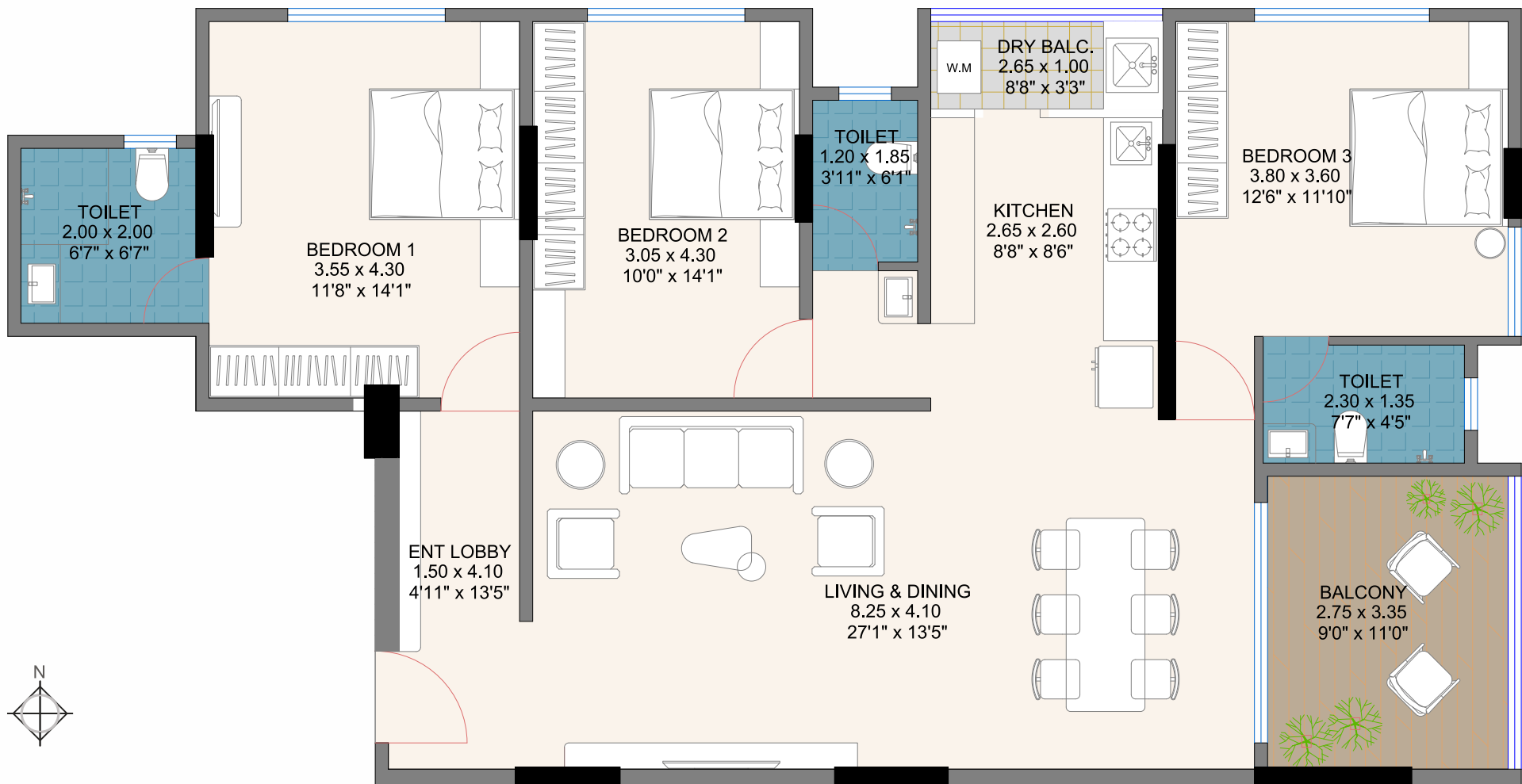


KEY AREA



2BHK
102, 202, 302 up to 1102

FLAT NO.	CARPET (SQMT)	BALCONY (SQMT)	TOTAL CARPET (SQMT)	TOTAL CARPET (SQFT)
102, 202, 302 up to 1102	76.62	7.94	84.56	910.20

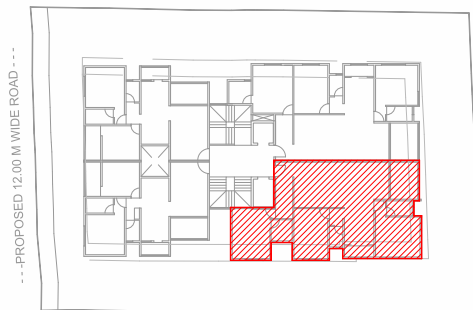
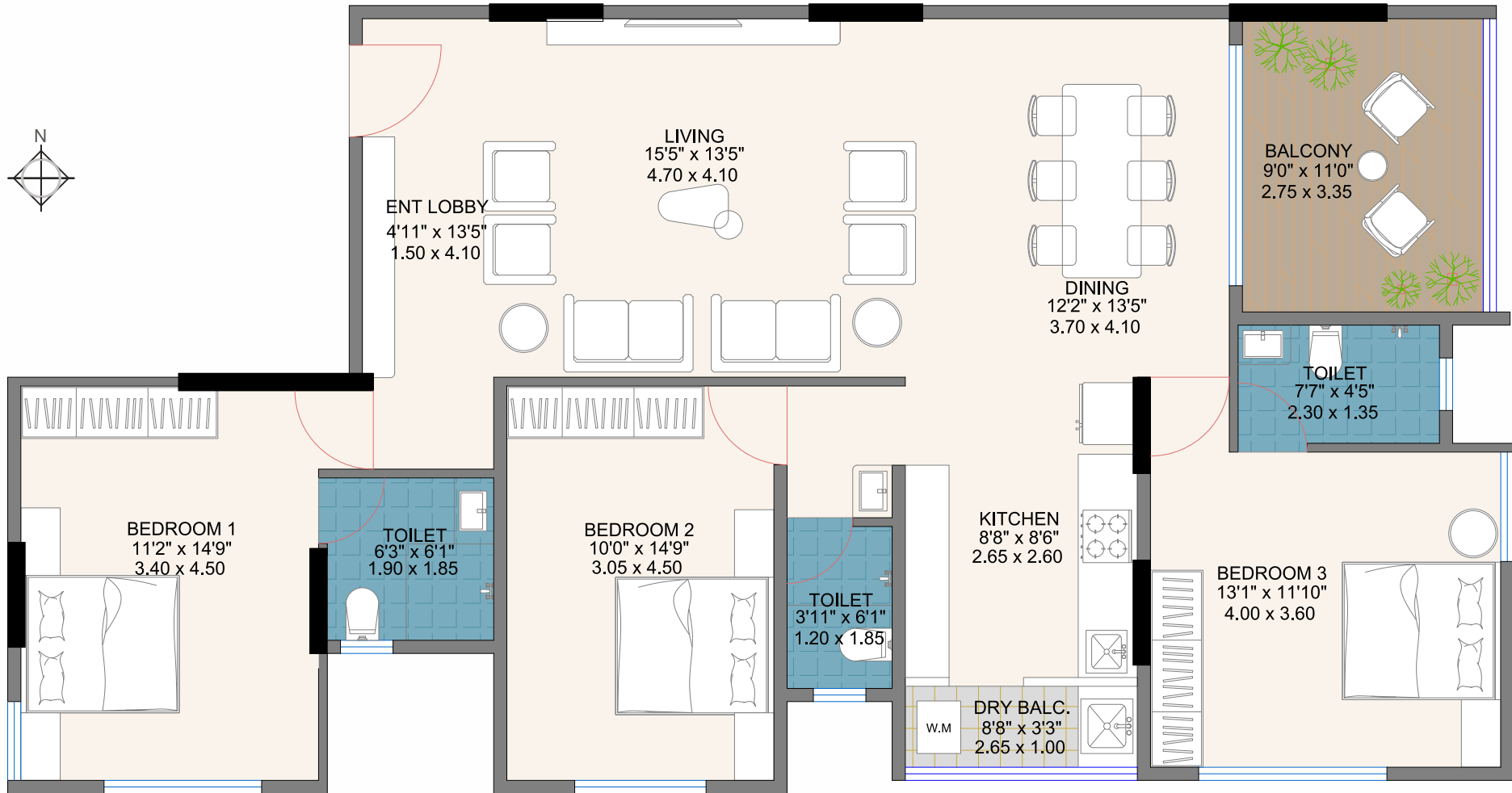


KEY AREA

3BHK

103, 203, 303 up to 1103

FLAT NO.	CARPET (SQMT)	BALCONY (SQMT)	TOTAL CARPET (SQMT)	TOTAL CARPET (SQFT)
103, 203, 303 up to 1103	108.32	11.86	120.18	1293.62



KEY AREA

--- PROPOSED 12.00 M WIDE ROAD ---

3BHK

104, 204, 304 up to 1104

FLAT NO.	CARPET (SQMT)	BALCONY (SQMT)	TOTAL CARPET (SQMT)	TOTAL CARPET (SQFT)
104, 204, 304 up to 1104	110.97	11.66	122.63	1319.99



The Nest Constructions is a registered partnership firm in the year 1996 . Mr. Charudatta D. Joshi, a qualified engineer is the managing partner. The firm conducts its business as a Promoter, Developer and Builder in the field of real estate development. Mr. Joshi also entrusted responsibility as a “Secretary” of Marathi Bandhkam Vyavasayik Associations (MBVA) having 300 builders/developers as a members.

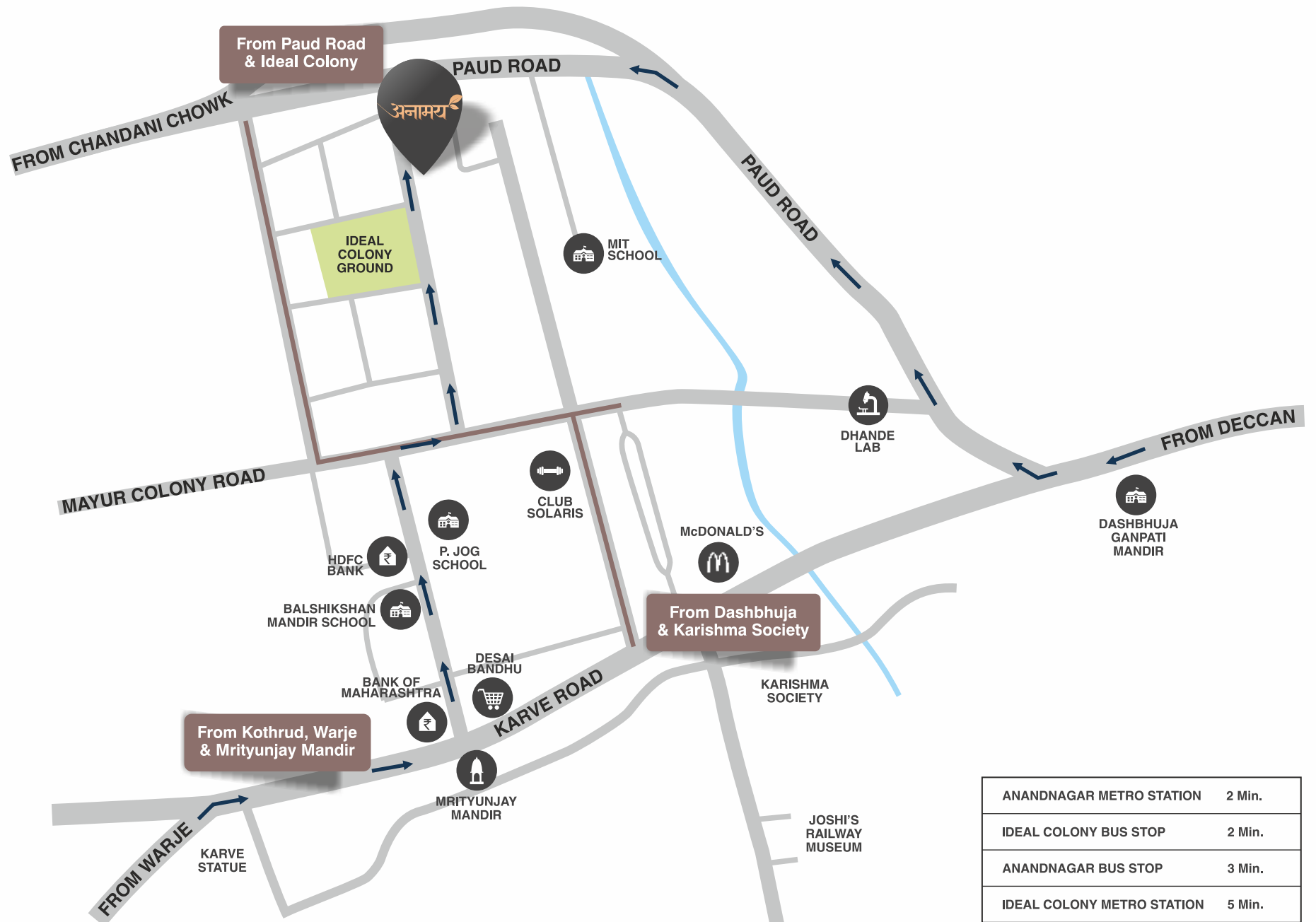
In the last 28 years, the firm has provided quality homes to 600 to 650 families in the sub-urban of Pune City. In addition to ownership residential flat constructions, the Nest Constructions has successfully completed industrial, commercial, special structure projects in and around Pune.

CREDITS

ARCHITECT
A DESIGN STUDIO

RCC CONSULTANT
JRCC CONSULTANTS

LEGAL CONSULTANT
ADV. DILIP ATHAVALE



A Project By



Office Address

F-3, Rohan Chambers, Near Karve Statue,
Kothrud, Pune 411038

Site Address

Anamay Apartments,
S.No. 129, Plot No. 23, CTS No. 828,
Ideal Colony, Kothrud, Pune 411038



+91 98508 99976



office@nestconstructions.in



thenestconstructions



www.nestconstructions.in



MahaRERA Reg. No. : P52100054508
maharera.mahaonline.gov.in



The content of this brochure are purely conceptual and have no legal binding on the Developer. Developer reserve all rights to amend floor plans, layout plans, number of flats/units, number of floors, building elevation, colour schemes, etc. without prior notice/ consent of the Purchasers.

In case a particular specification or amenity is not easily available or has been discontinued or has reports of malfunction or the Developer has any reservations as to its quality, then in such a case, the Developer shall have a sole right to use any other brand or colour of specification or amenity, which is similar to in usage to the agreed one.